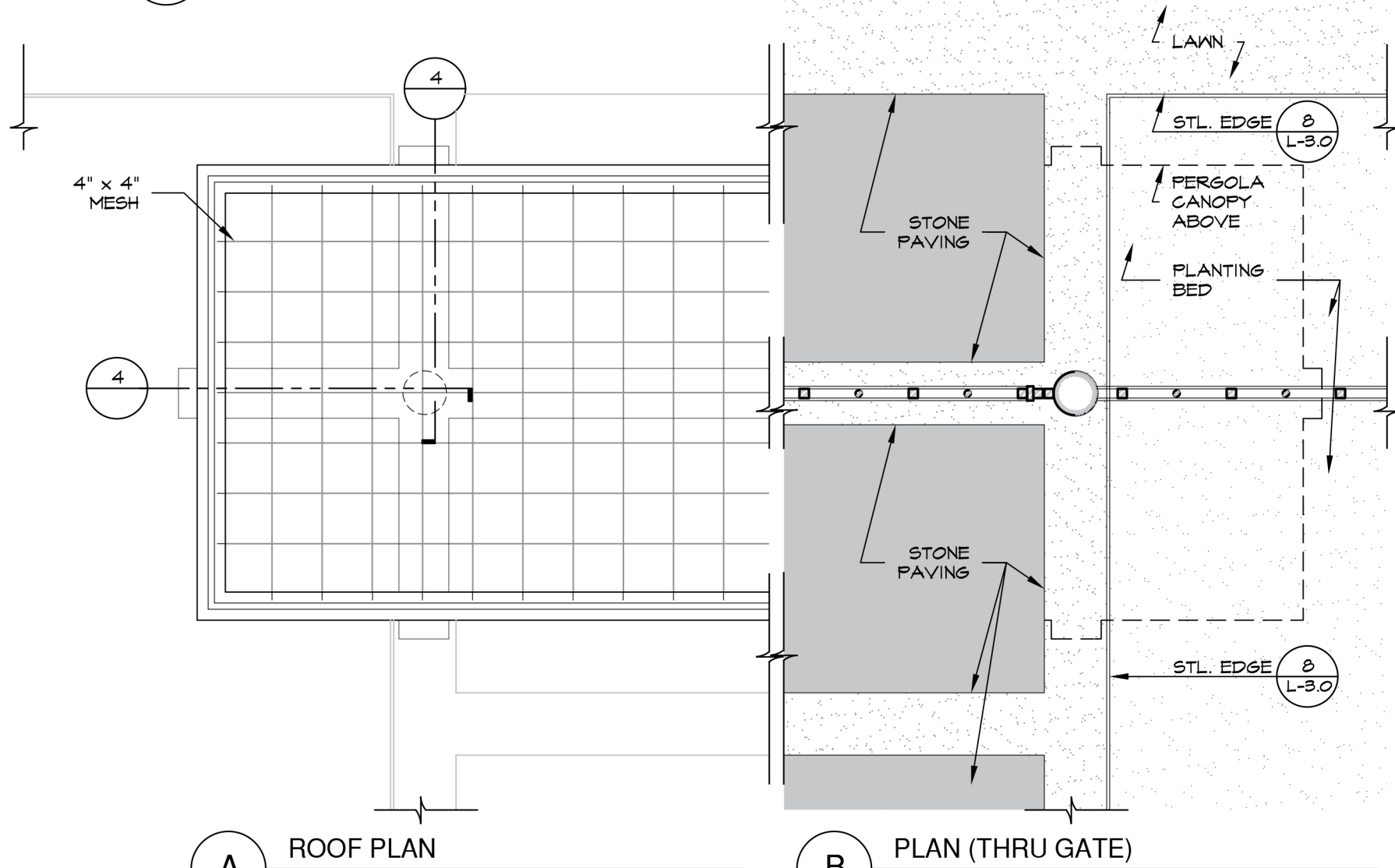
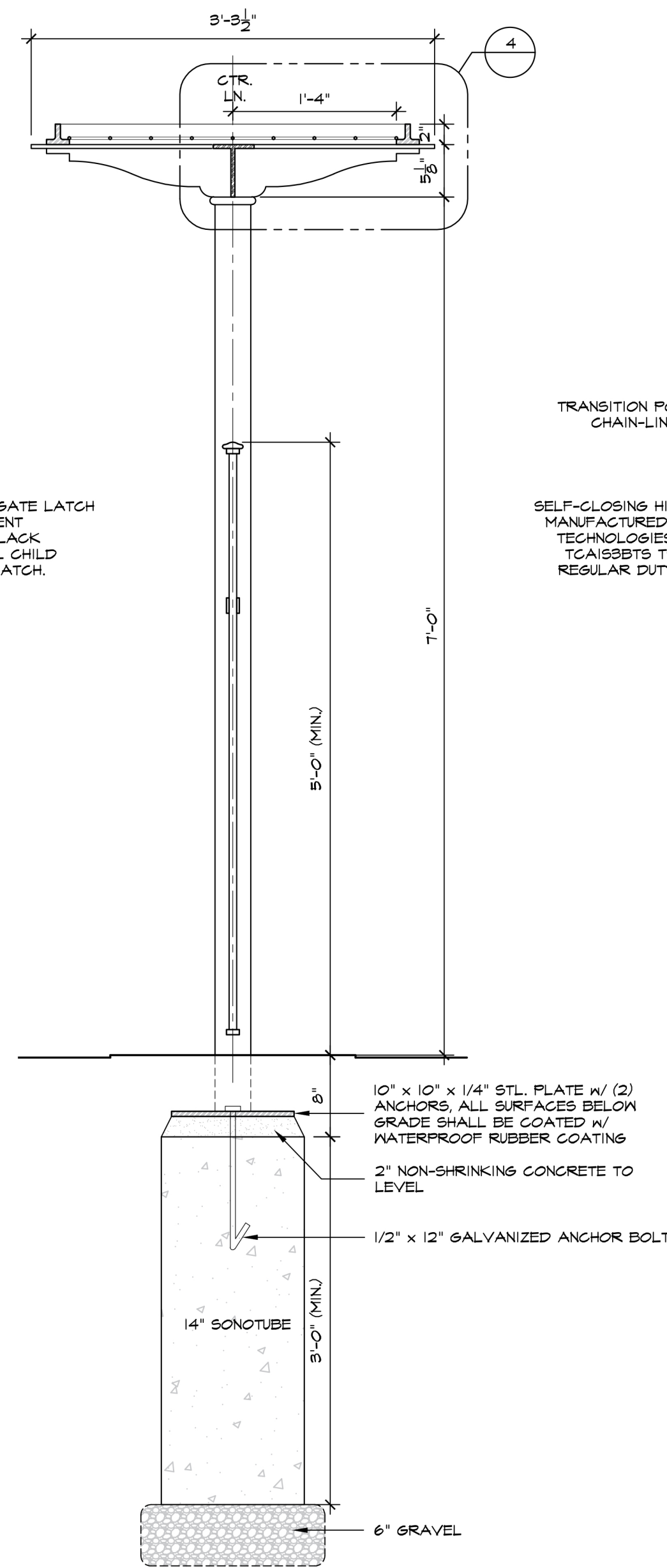


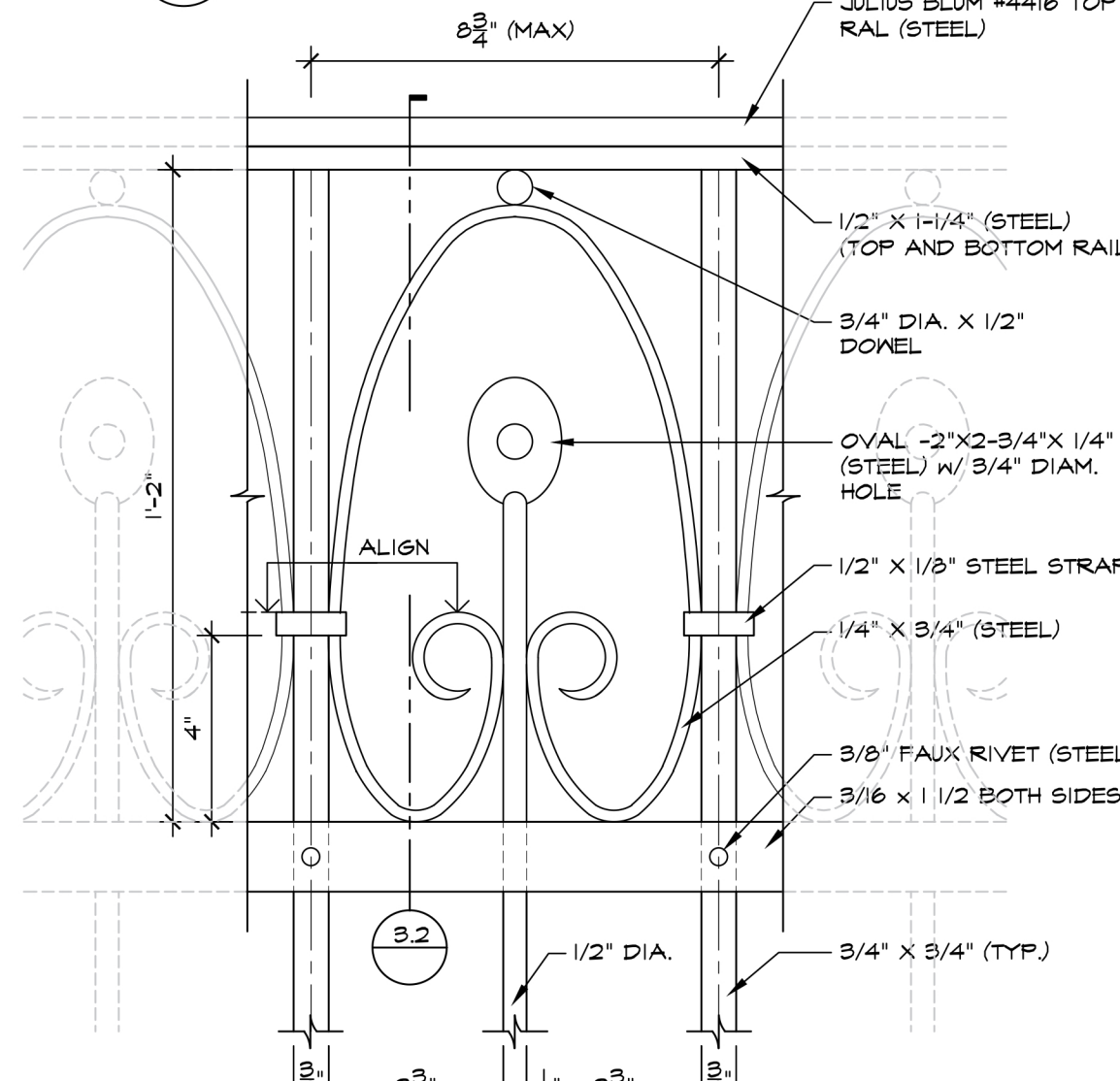
1 ELEVATION - POOL ENTRANCE PERGOLA & DECORATIVE FENCE
SCALE: 1"=1'-0"



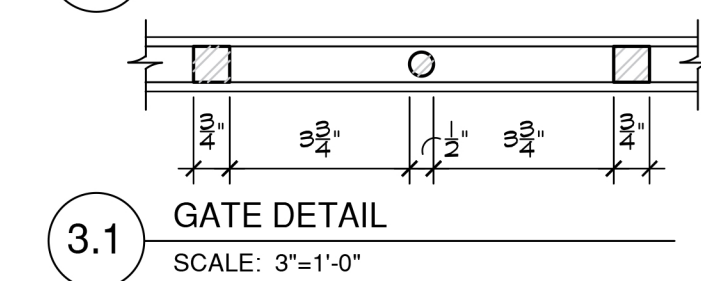
1.2 PLAN - POOL ENTRANCE PERGOLA & DECORATIVE FENCE
SCALE: 1"=1'-0"



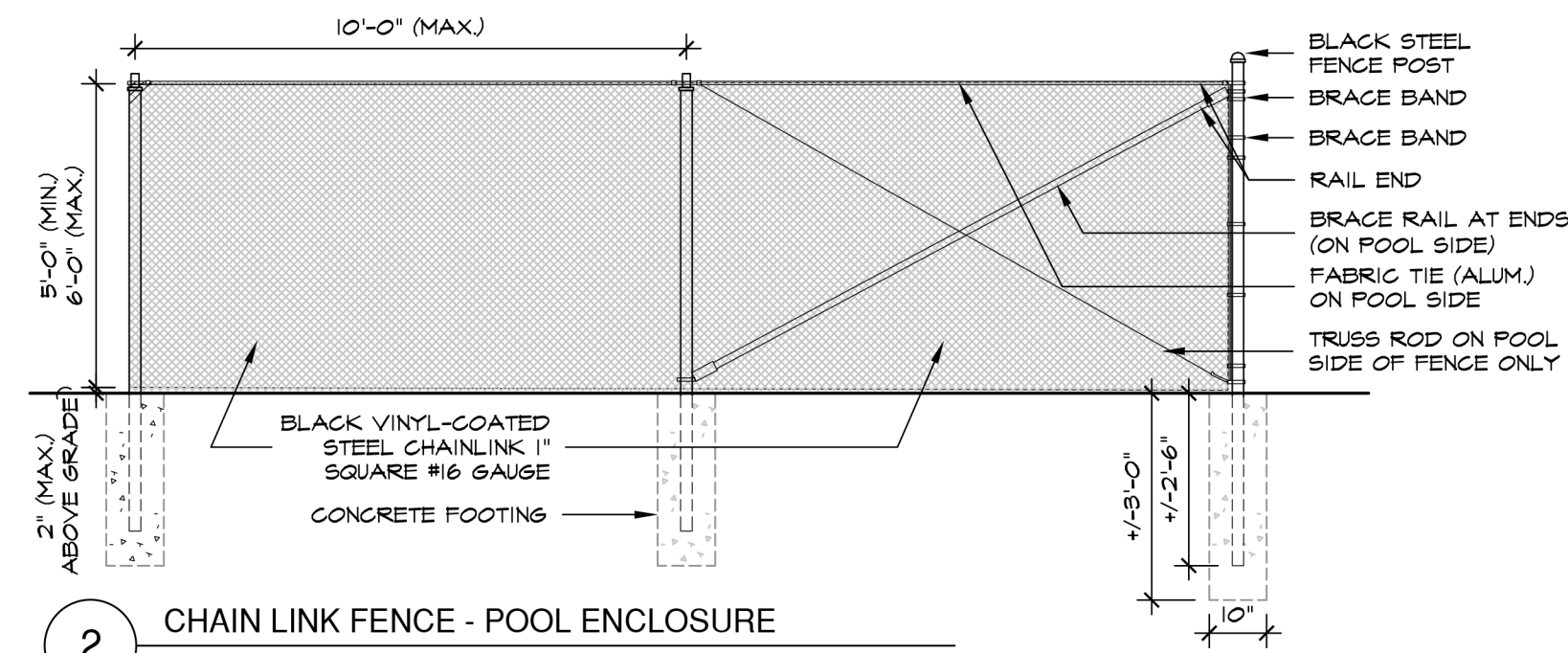
1.1 SIDE ELEVATION - POOL ENTRANCE PERGOLA
SCALE: 1"=1'-0"



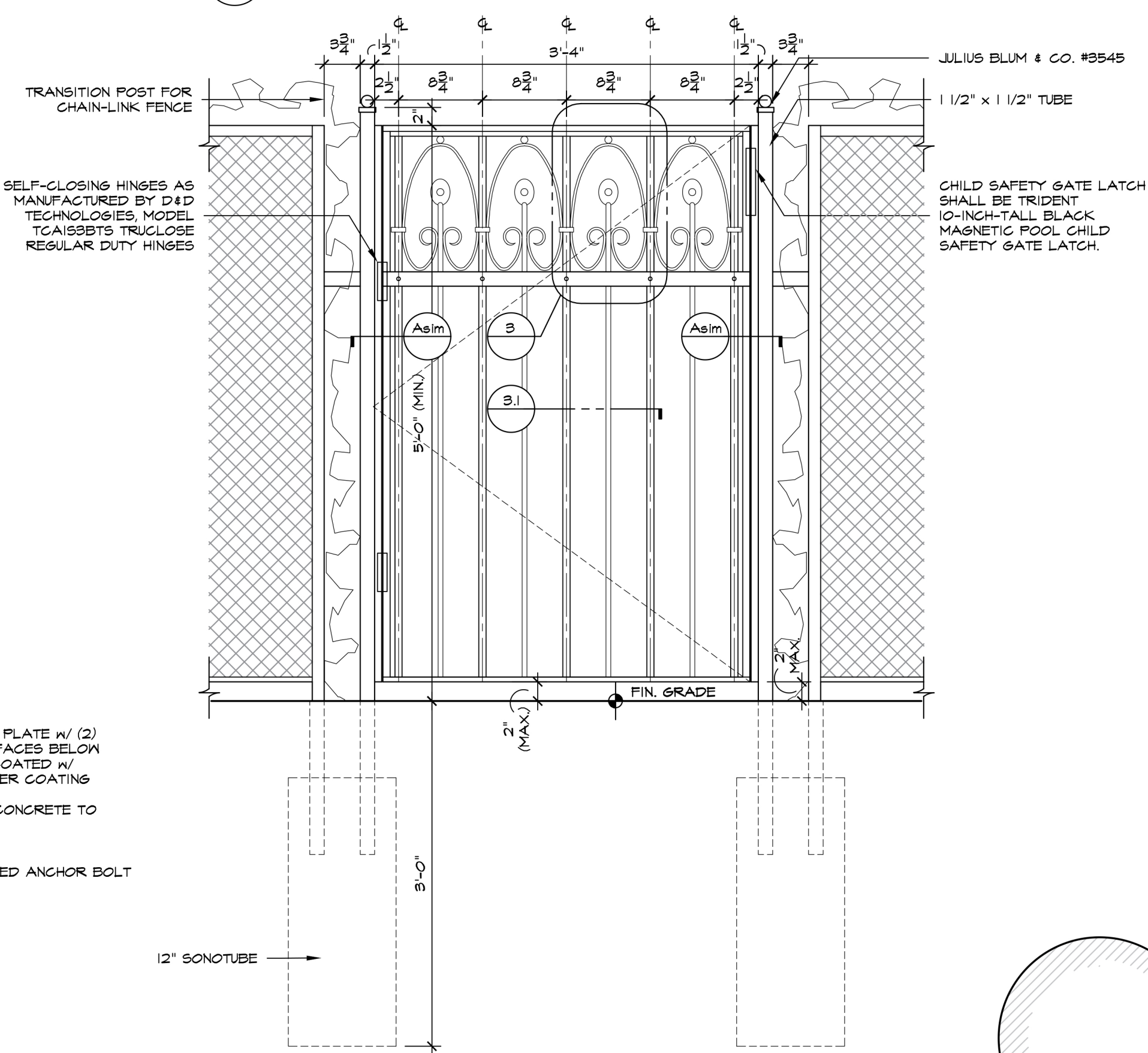
3 GATE DETAIL
SCALE: 3"=1'-0"



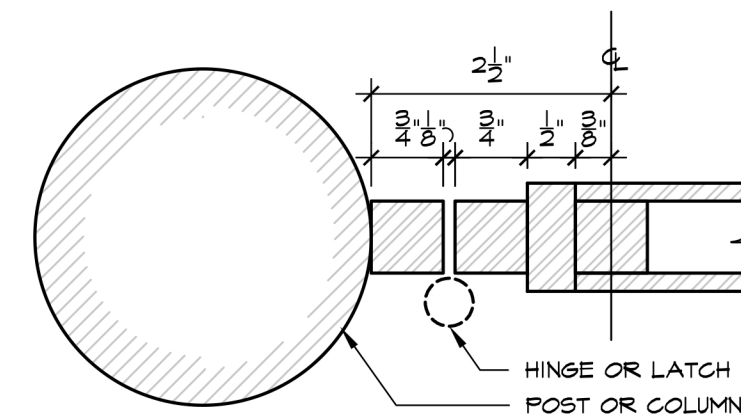
3.1 GATE DETAIL
SCALE: 3"=1'-0"



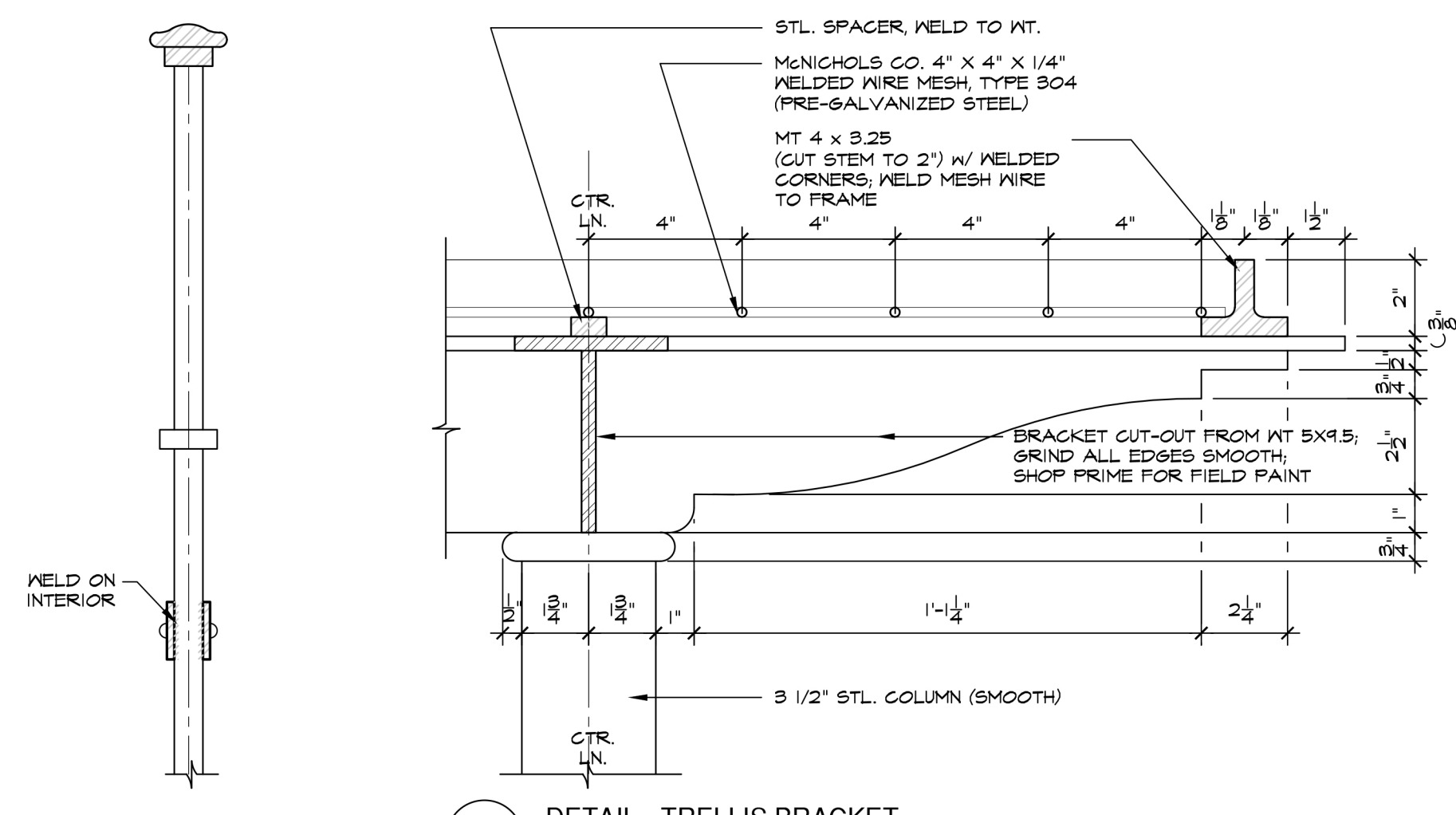
2 CHAIN LINK FENCE - POOL ENCLOSURE
SCALE: N.T.S.



2.1 ELEVATION - POOL GATE
SCALE: 1"=1'-0"



A DETAIL
SCALE: 6"=1'-0"



4 DETAIL - TRELLIS BRACKET
SCALE: 3"=1'-0"

GENERAL NOTES:

- S/C SHALL PROVIDE SHOP DRAWINGS FOR ARCHITECTS APPROVAL PRIOR TO FABRICATION. DETAILED DRAWINGS SHALL SHOW ALL COMPONENTS OF UNITS, TO BE FABRICATED OFF-SITE. MIN. SCALE: 1/16" = 1'-0". ALL COMPONENTS SHALL BE SHOP-FINISHED AS SPECIFIED. ANY DISCREPANCY WHICH ALTERS DESIGN MUST HAVE ARCHITECT APPROVAL.
- ALL STEEL COMPONENTS SHALL BE SHOP-PRIMED (BLACK). ALL WELDED JOINTS SHALL BE GRIND SMOOTH AND ALL COMPONENTS SHALL BE READY FOR FINISH FIELD PAINT.
- ALL STEEL COMPONENTS THAT ARE BELOW FINISH GRADE SHALL BE COATED WITH RUBBER COATING.

POOL & SPA, FENCE AND GATE NOTES:

- THE PROPOSED FENCING AND GATES SHALL CONSTRUCTED AND INSTALLED TO COMPLY WITH SECTION AS1025 THROUGH AS1025 FOR POOL BARRIER REQUIREMENTS LOCATED IN APPENDIX 5 OF THE NEW YORK STATE RESIDENTIAL BUILDING CODE AND CHAPTER 3, SECTION 303.3 OF THE NEW YORK STATE. ALL COMPONENTS MUST COMPLY WITH CHAPTER 42: SWIMMING POOLS.
- ALL ACCESS GATES MUST BE LOCKABLE WITH A KEY COMBINATION, OR OTHER CHILD-PROOF LOCK WHEN THE SWIMMING POOL IS NOT IN USE OR SUPERVISED.
- PEDESTRIAN ACCESS GATES MUST OPEN OUTWARD AWAY FROM THE POOL, AND BE SELF-CLOSING AND SELF-LATCHING.
- THE BARRIER MUST BE AT LEAST 60" IN HEIGHT. THE SPACE BETWEEN THE BOTTOM OF THE BARRIER AND THE GROUND CANNOT EXCEED 2 INCHES. ANY OPENINGS IN THE BARRIER MUST BE NO LARGER THAN 2" IN ANY DIMENSION.
- THE RELEASE MECHANISM OF THE SELF-LATCHING DEVICE SHALL BE LOCATED 54" OR MORE FROM THE BOTTOM OF THE GATE.
- ALL STEEL GATE ASSEMBLIES REQUIRE SHOP DRAWINGS FOR APPROVAL.
- ALL METAL FENCING AND GATES SHALL BE TREATED WITH TWO (2) COATS OF RUST-INHIBITING PRIMER AND WITH TWO (2) COATS OF FINISH PAINT AS APPROVED BY ARCHITECT (COLOR TBD).
- PROVIDE FULL HEIGHT MOCK-UP 24" MIN. WIDTH OF METAL GATE OR FENCE PANEL THAT INCLUDES ALL COMPONENTS FOR ARCHITECTS APPROVAL. ARCHITECT MAY REQUEST MINOR DESIGN CHANGES TO RAILING DESIGN BASED ON MOCK-UP WHICH SHALL BE INCORPORATED INTO THE FINAL PRODUCT. ALL MOCK-UPS SHALL BE FINISHED WITH FINISH PAINT. CONSULT WITH ARCHITECT PRIOR TO FABRICATION.
- THE LOCATION OF THE FENCE, GATE, AND POSTS SHALL BE STAKED OUT IN FIELD PRIOR TO FABRICATION AND MUST BE APPROVED BY THE ARCHITECT.

06-02-23	ISSUED FOR AHRB APPROVAL
04-19-23	RE-ISSUED FOR PLANNING BD. APPROVAL
03-21-23	RE-ISSUED FOR PLANNING BD. APPROVAL
05-18-21	RE-ISSUED FOR PLANNING BD. APPROVAL
04-21-21	ISSUED FOR PLANNING BD. APPROVAL

No.	Date	Revision
-----	------	----------

Project Title
SIRULNIK RESIDENCE
19 South Matthiessen Park
Irrington, NY 10533

Architect
Opacic Architects
24 North Astor
Irrington, NY 10533
(914) 591-4306
(914) 591-4308

Landscape Architect
AZ Associates Ltd.
Design & Horticultural Consultant
Anthony Zaino
7 South Ridge Road
Brookfield, CT 06804
Tel: (203) 417-2979



Drawing Title
PROPOSED SITE DETAILS - POOL GATE AND DECORATIVE FENCE

Scale	Job no.	Issue Date	Drawing no.
AS NOTED	1806	03-22-23	L-3.2
Drawn By	Checked By	Approved By	
MM			