

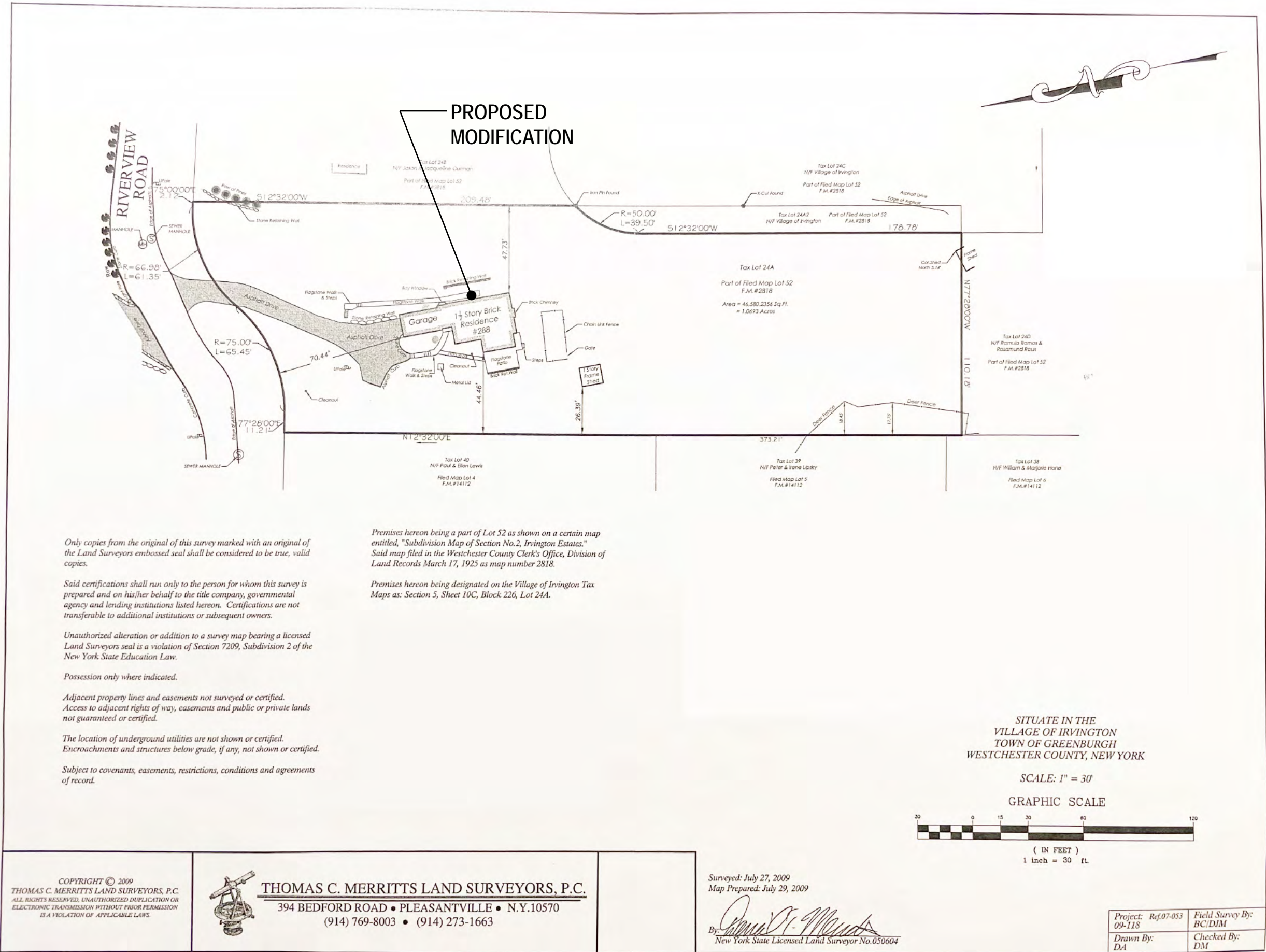
288 RIVERVIEW RD
IRVINGTON, NY

ARB REVIEW
MARCH 6, 2023

EAST FACADE
SCOPE OF WORK:

REMOVE DOOR, ADD NEW
WINDOW TO MATCH WIN-
DOWS THROUGHOUT IN
EXISTING OPENING WITH
EXISTING HEADER, PATCH
AND REPAIR BRICK AS
REQUIRED.

EXISTING
SURVEY



DOOR TO BE REMOVED



EXISTING EAST FACADE



EXISTING EAST FACADE -
ELEVATION CHANGE

288 RIVERVIEW RD
IRVINGTON, NY

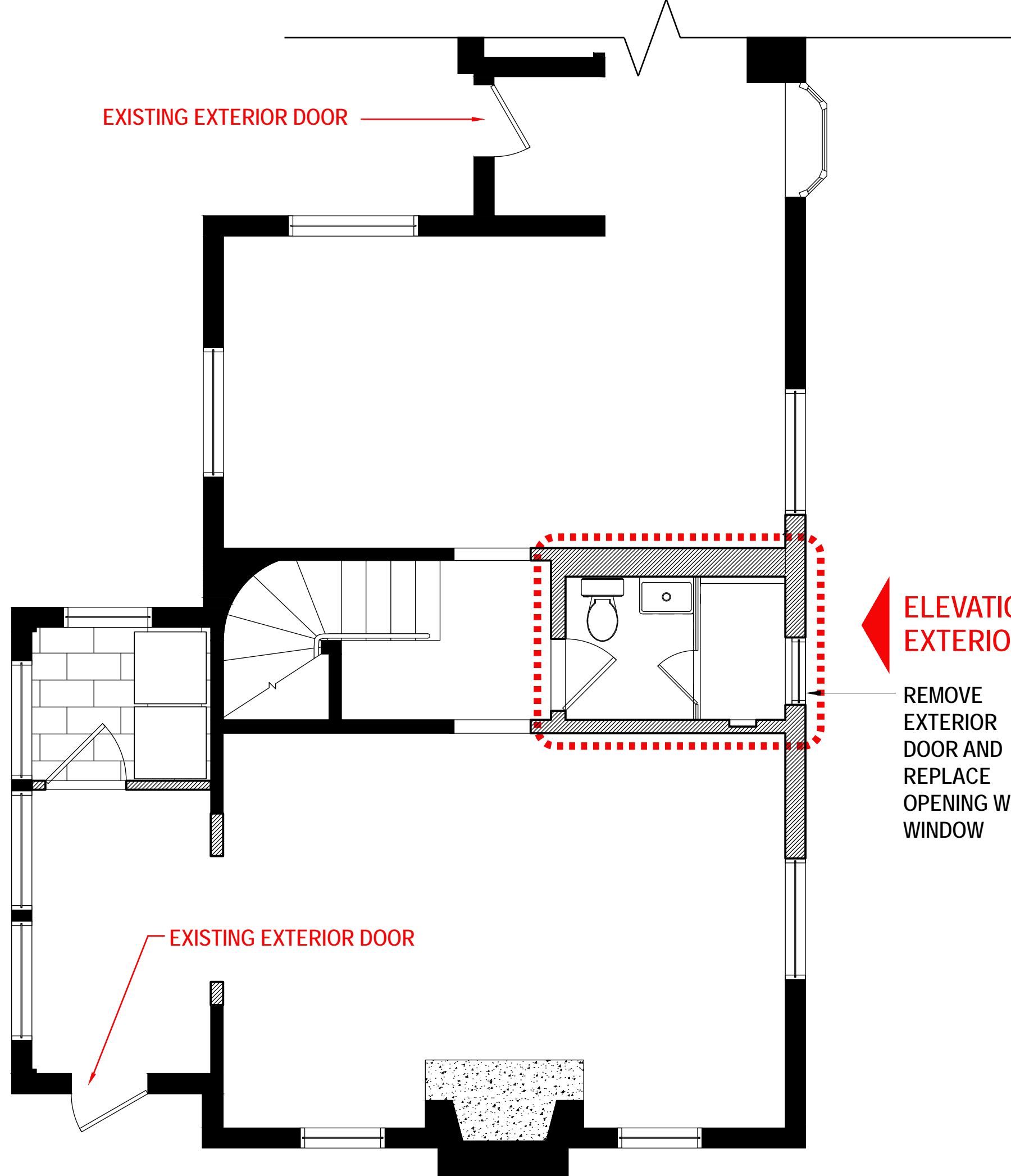
ARB REVIEW
MARCH 6, 2023

EAST FACADE
SCOPE OF WORK:

REMOVE DOOR, ADD NEW
WINDOW TO MATCH WIN-
DOWS THROUGHOUT IN
EXISTING OPENING WITH
EXISTING HEADER, PATCH
AND REPAIR BRICK AS
REQUIRED.

EXISTING
PHOTOS

EXISTING EXTERIOR DOOR



288 RIVERVIEW RD
IRVINGTON, NY

ARB REVIEW
MARCH 6, 2023

EAST FACADE
SCOPE OF WORK:

REMOVE DOOR, ADD NEW
WINDOW TO MATCH WIN-
DOWS THROUGHOUT IN
EXISTING OPENING WITH
EXISTING HEADER, PATCH
AND REPAIR BRICK AS
REQUIRED.

ELEVATION
EXTERIOR

REMOVE
EXTERIOR
DOOR AND
REPLACE
OPENING WITH
WINDOW

PROPOSED
PLAN

PAGE 3 OF 5



1

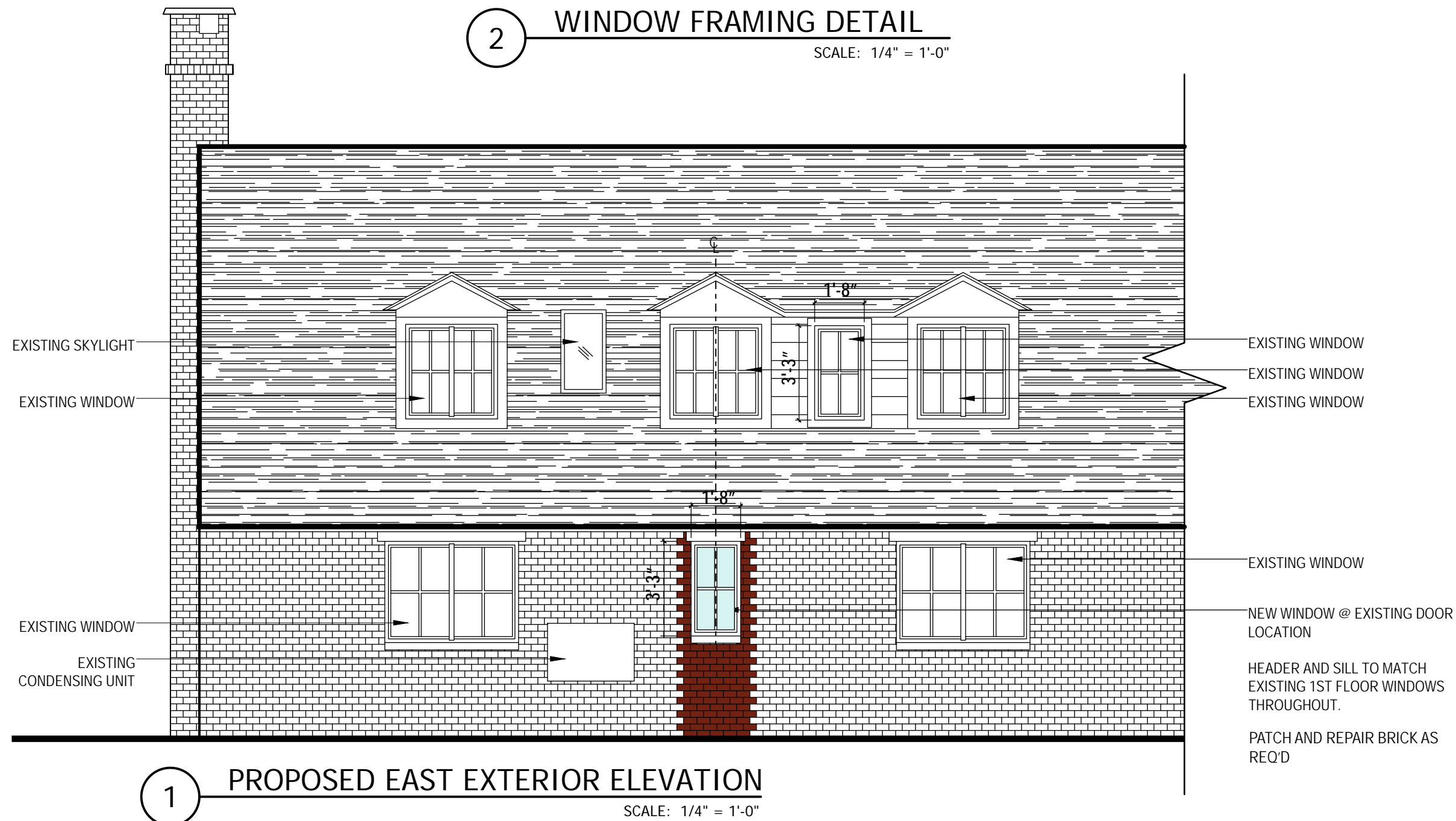
PROPOSED PLAN

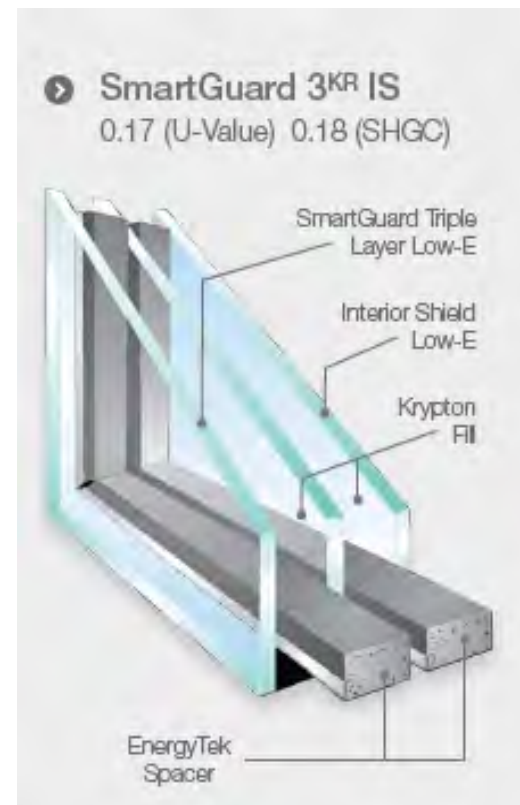
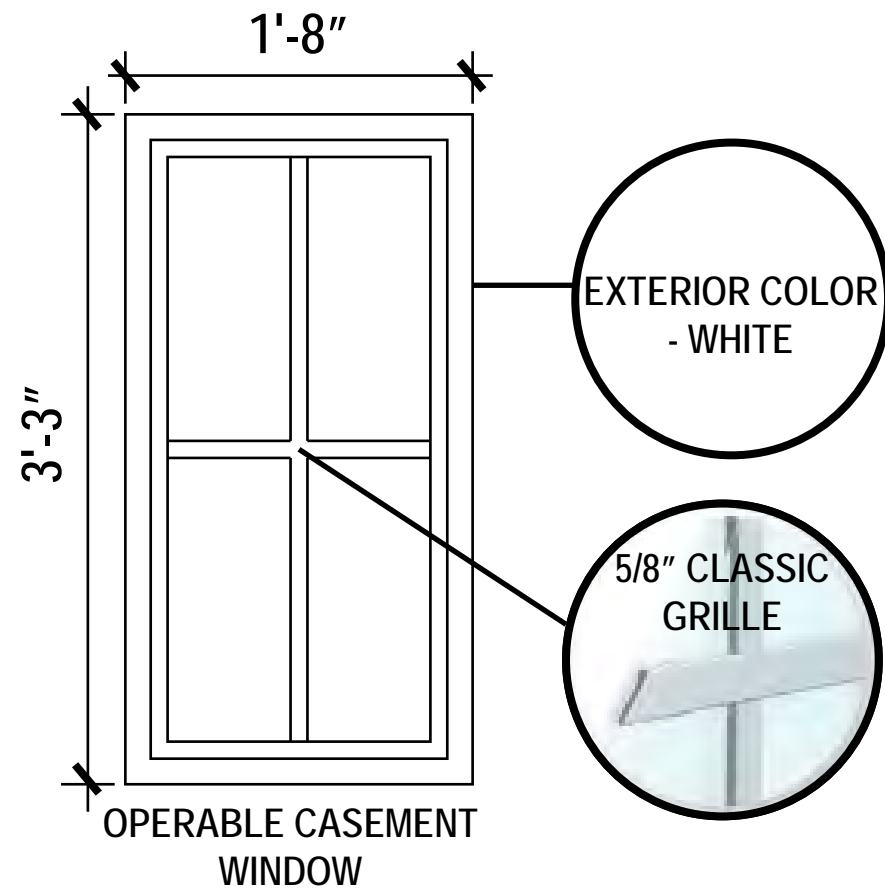
SCALE = 1/4" = 1'-0"

ARB REVIEW
MARCH 6, 2023

REMOVE DOOR, ADD NEW WINDOW TO MATCH WINDOWS THROUGHOUT IN EXISTING OPENING WITH EXISTING HEADER, PATCH AND REPAIR BRICK AS REQUIRED.

PAGE 4 OF 5





U-Factor

A measure of the rate of heat flow through a window. The greater a window's resistance to heat flow the better its insulating properties. A lower U-Factor indicates a higher performing window that can help reduce heating and cooling costs.



Solar Heat Gain Coefficient (SHGC)

The amount of solar radiation allowed to pass through a window. The lower the number, the less solar heat gain the window permits.



Visible Light Transmittance (VT)

The measure of how much light passes through a window.

Structural-Design Pressure (DP)

The amount of wind pressure a window will withstand when closed and locked.



SmartCore

This high-density insulation provides a NFRC determined R-Value of 7.25 per inch of thickness. ecoCore available as an option.



RigidCore

Our sliding window features RigidCore at the meeting rails for unsurpassed strength and durability.



Rollers

Sliding windows feature a heavy-duty roller system that enables windows to glide open with ease.



Pull Rails

Installed on left and right sides for ease of operation.



Ventilation Limit Latches

Ventilation limit latches are standard and provide added security while open.

Passes ASTM F 568-97 (Grade 10) forced-entry resistance.

288 RIVERVIEW RD
IRVINGTON, NY

ARB REVIEW
MARCH 6, 2023

EAST FACADE
SCOPE OF WORK:

REMOVE DOOR, ADD NEW WINDOW TO MATCH WINDOWS THROUGHOUT IN EXISTING OPENING WITH EXISTING HEADER, PATCH AND REPAIR BRICK AS REQUIRED.

WINDOW
SPECS